

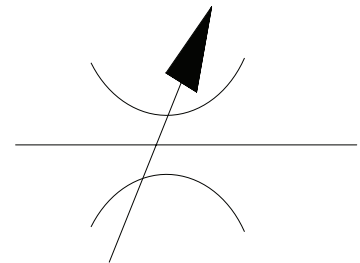
**FLOW CONTROL VALVES**



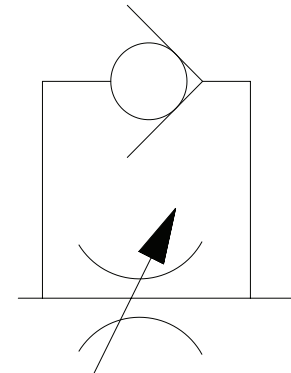
Working pressure 10000 psi

3/8" - 18 NPT female connection ports

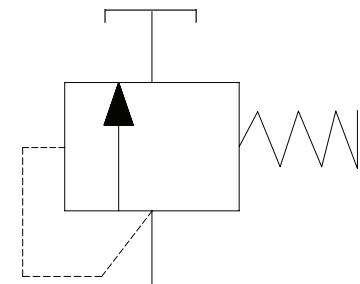
Model number	Description	Dimensions (in)		
		Height	Length	Width
HM1C	Manual shut off valve with needle type flow control. Used for load holding and throttling functions. Can also be used as a gauge isolator.	3.23	2.52	1.5



Model number	Description	Dimensions (in)		
		Height	Length	Width
HFV66	Manual check valve used for automatic load locking, with precise manual load lowering feature.	3.39	2.96	1.85



Model number	Description	Dimensions (in)		
		Height	Length	Width
HPV152	Adjustable pressure relief valve, for pressure setting from 800 to 10000 psi. Supplied complete with return line hose.	4.02	2.52	1.26



Model number	Description	Dimensions (in)		
		Height	Length	Width
HFV42	Pilot operated check valve used as a safety valve for double acting cylinders. Pilot port connects to cylinder retract line.	3.31	2.52	1.26

